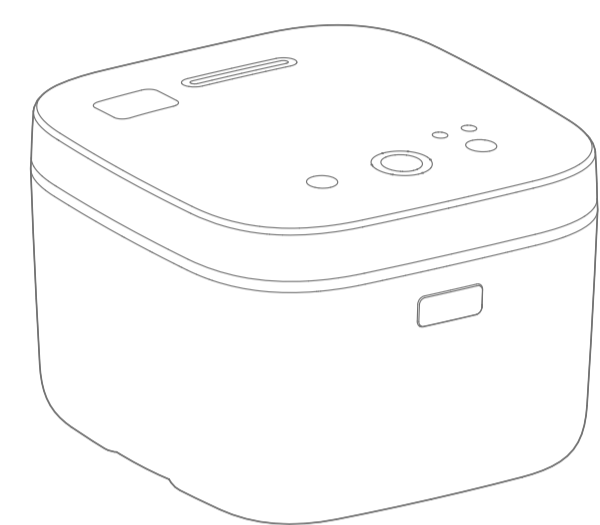


## HEAT PRESS Product Usage Instruction

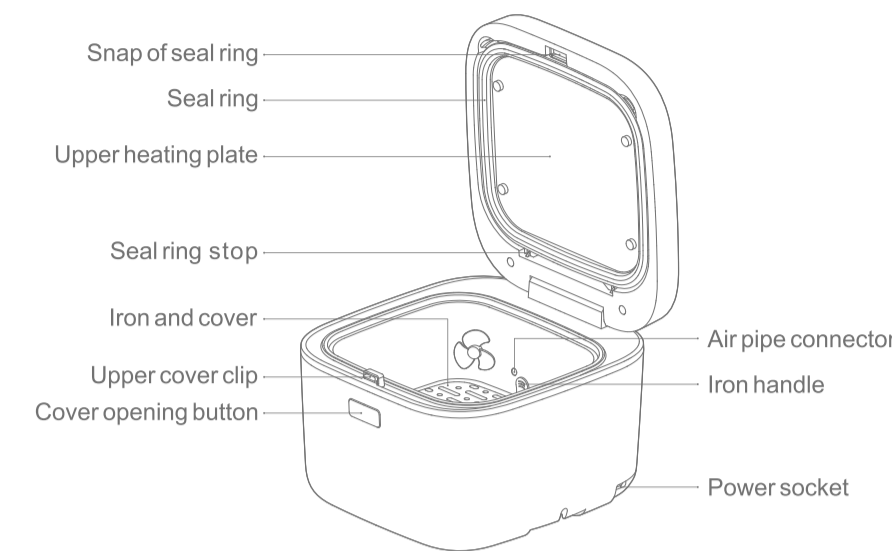
Please read the instruction carefully before using and keep it well.



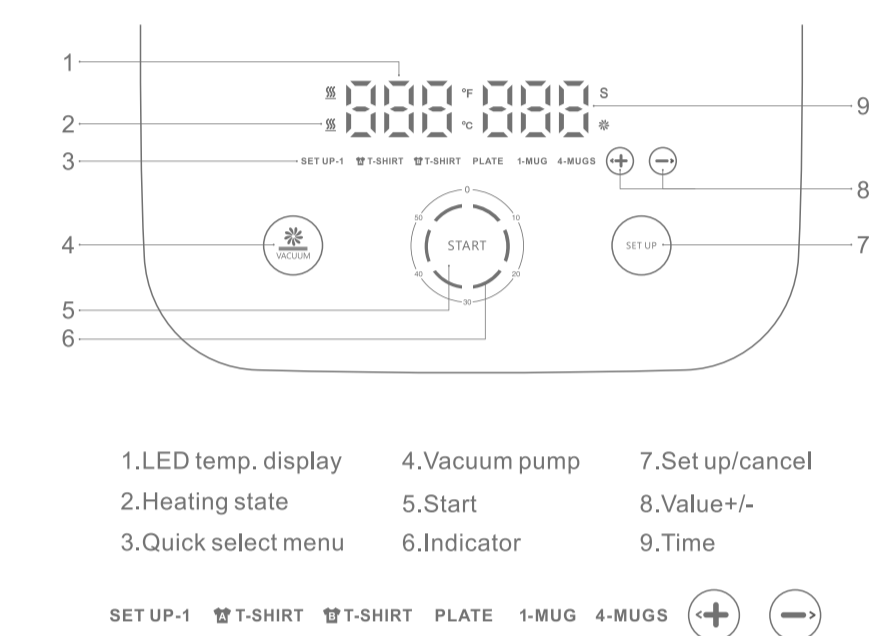
**Print As You Want**  
Small 3D Vacuum Heat Transfer Machine

⚠ Warnings must be followed carefully to avoid body injury.

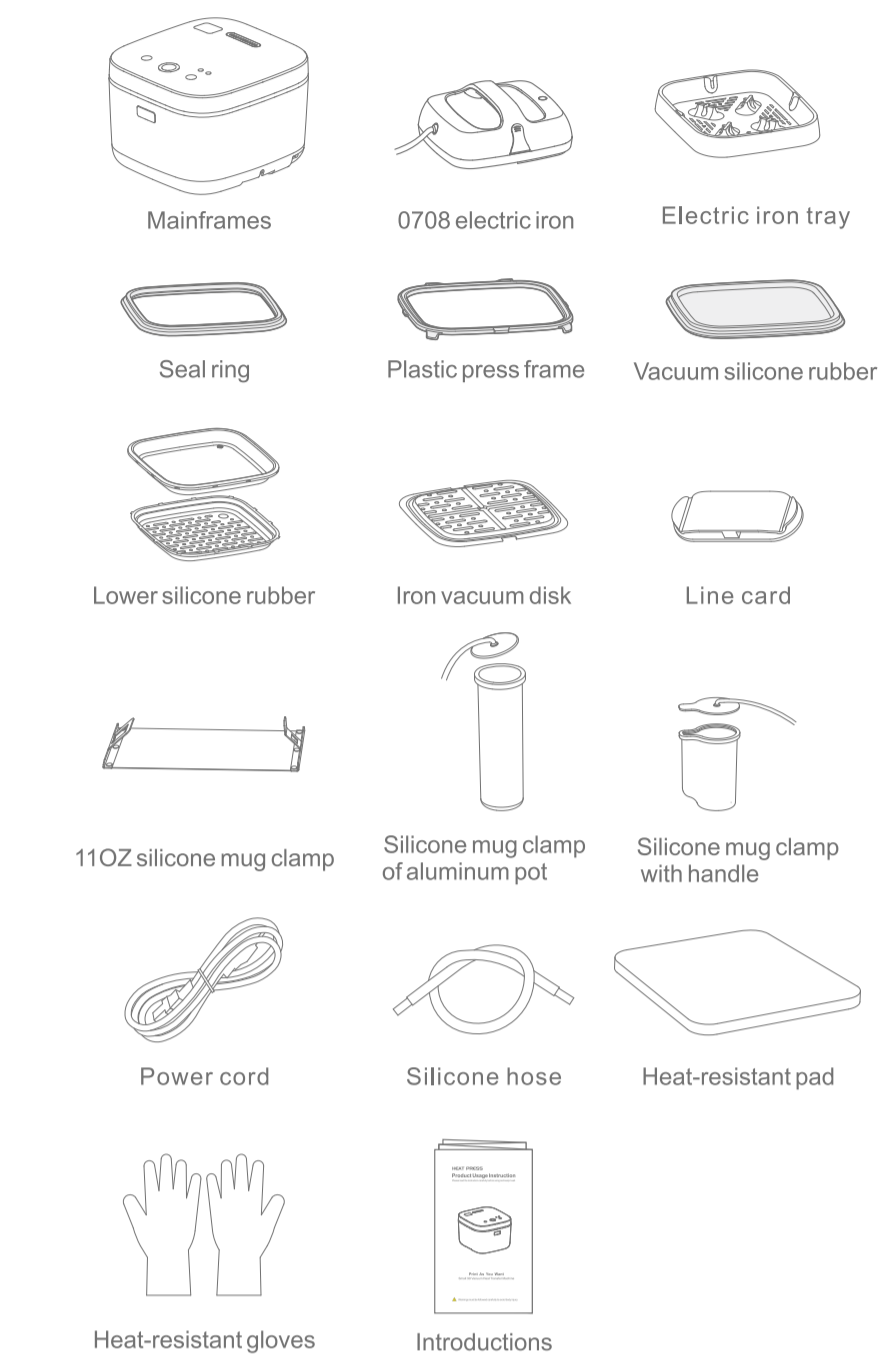
### Introduction



### Control Panel



### Accessories



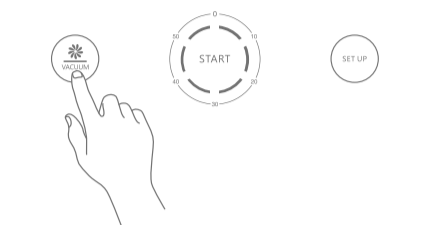
### °C/°F Temperature Conversion

°F = °C



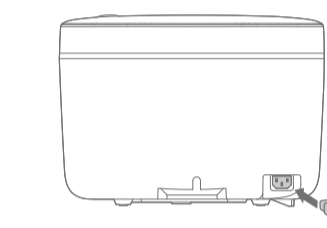
1. Press and hold the SET UP button for 6s in the shutdown state
2. Press +/- to select the temperature unit.
3. Press START button to start the machine.

### Restore Factory Settings

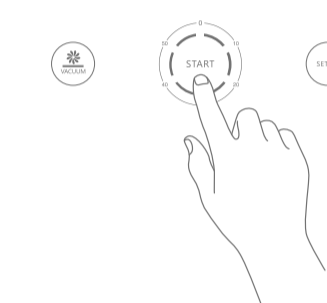


1. Press and hold the VACUUM button for 6s in the shutdown state.
2. It will restore the factory settings after a beep sound.
3. Press START button to start the machine.

### Getting Started



Connect the power cord:  
Confirm the voltage of the machine before use, connect the power cord to the power port behind the machine and insert the plug into the socket.

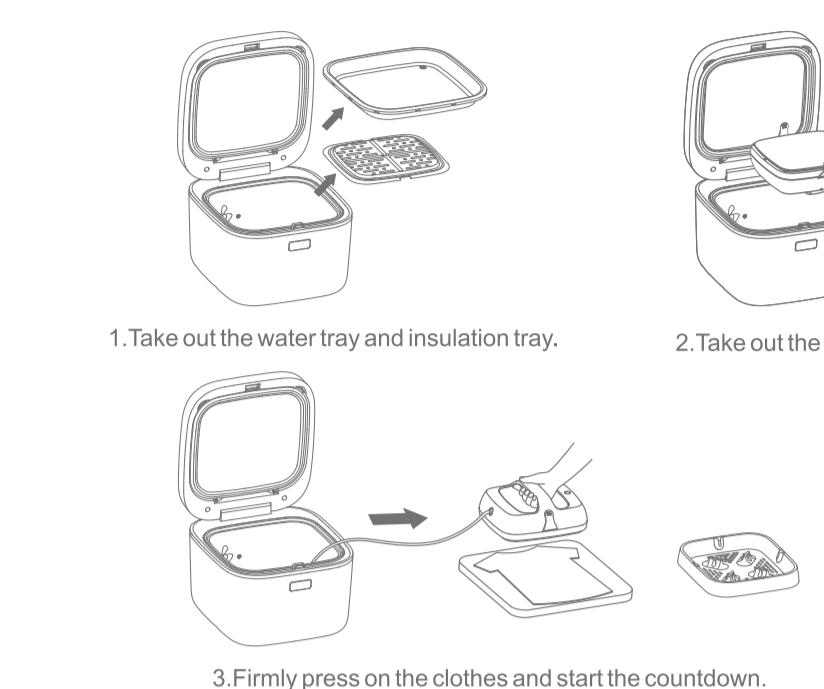


**Start:**  
After power on, short press the "START" button to start the machine and it will automatically start heating after 3s.

**Shutdown:**  
Press and hold "START" button for 3s to shut down the machine.

**Auto shutdown:**  
The machine will automatically shut down if it is not operated within 120min.

### Printing of Clothes

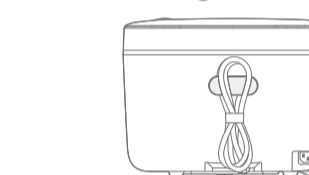


**Parameter Setting**  
Printing materials: Heat transfer film  
1. Press SET UP button to show the symbol +/-.  
2. Change to (A)-T-SHIRT mode.  
3. Temperature: 180°C Time: 25S  
4. Temperature: 180°C Time: 60S

**Transfer Process**  
Press the timing button during hot pressing and then place the iron on the insulation tray.  
Heating plate size: 7X8"

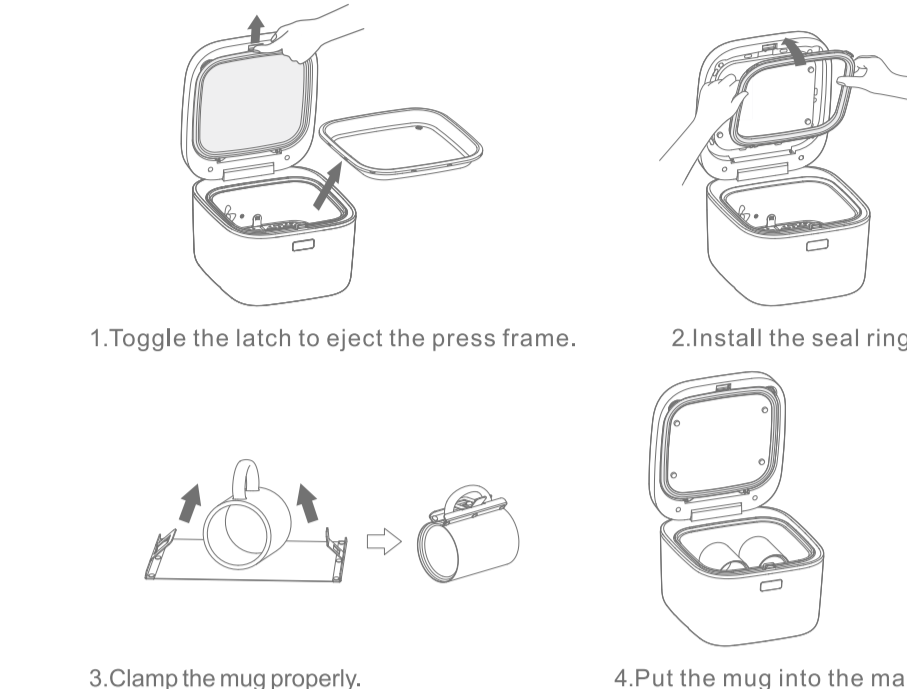
**Tips:**  
If the transferred pattern size is larger than the heating plate, please move the iron to transfer alternately.

### Cord organization



Put the cord of the iron on the outside of the machine as shown in the figure.

### Printing of 110z Mug

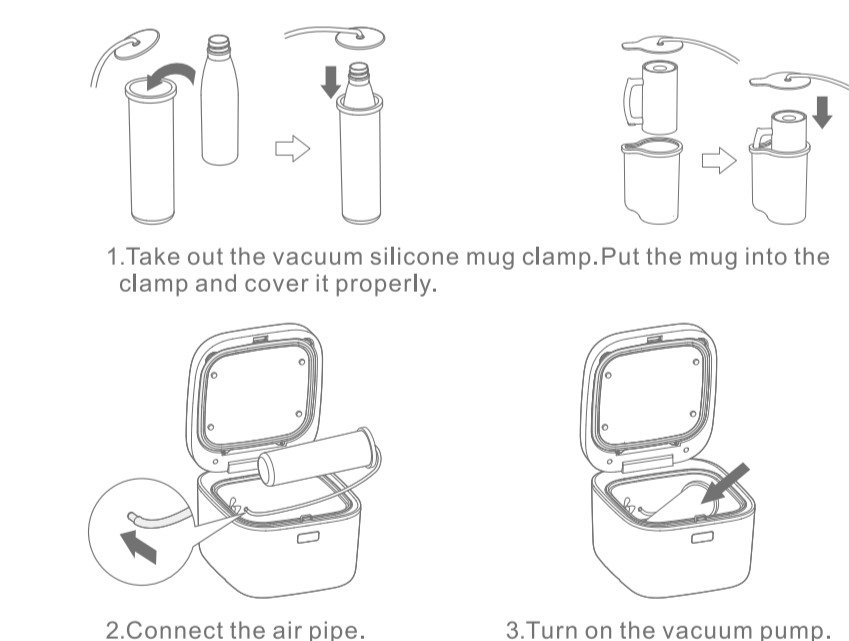


**Parameter Setting**  
Qty: 1 PCS  
Press SET UP button to show the symbol +/-.  
Change to (1)-MUG mode.  
Upper temp.: 210°C Lower temp.: 220°C  
Time: 600S

Qty: 2 PCS  
Press SET UP button to show the symbol +/-.  
Change to (4)-MUGS mode.  
Upper temp.: 210°C Lower temp.: 220°C  
Time: 720S

**Tips:**  
1. Increase the transfer time if the color of the transferred pattern is too light.  
2. Reduce the transfer time if the color of the transferred pattern is too dark.

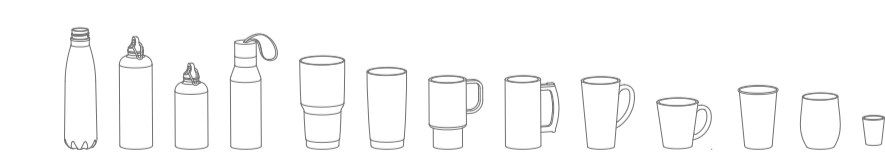
### Printing of Vacuum Silicone Mug Clamp



**Parameter Setting**  
Material: Aluminum pot  
Qty: 1 PCS  
Press SET UP button to show the symbol +/-.  
Change to (1)-MUG mode.  
Upper temp.: 210°C Lower temp.: 220°C  
Time: 600S

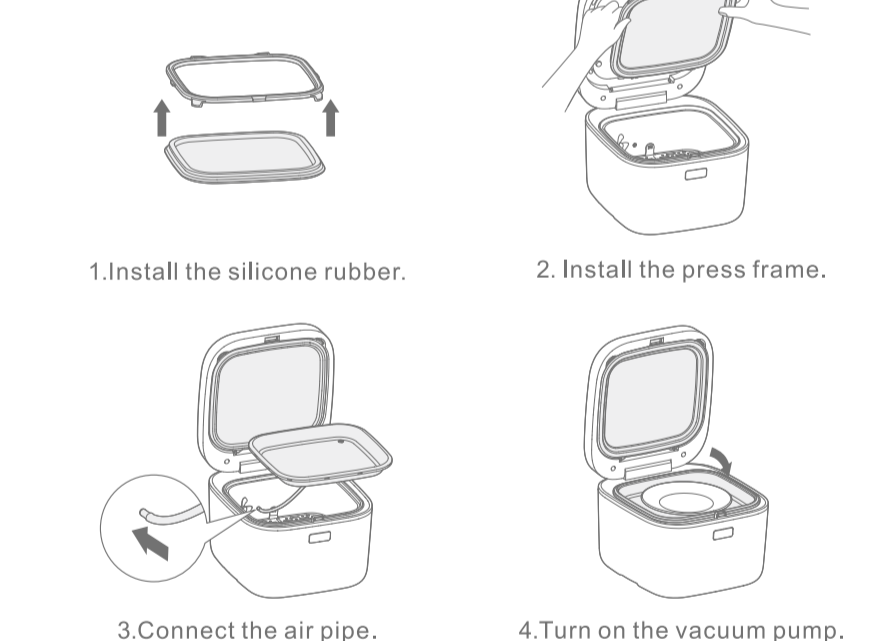
**Tips:**  
1. Increase the transfer time if the color of the transferred pattern is too light.  
2. Reduce the transfer time if the color of the transferred pattern is too dark.

Different types of mugs can be printed



Max. diameter: 90mm Max. length: 260mm

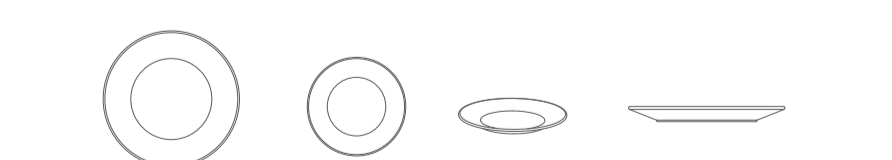
### Printing of Plate



**Parameter Setting**  
Material: Plate  
Qty: 1 PCS  
Press SET UP button to show the symbol +/-.  
Change to (Plate) mode  
Upper temp.: 210°C Lower temp.: 220°C  
Time: 420S

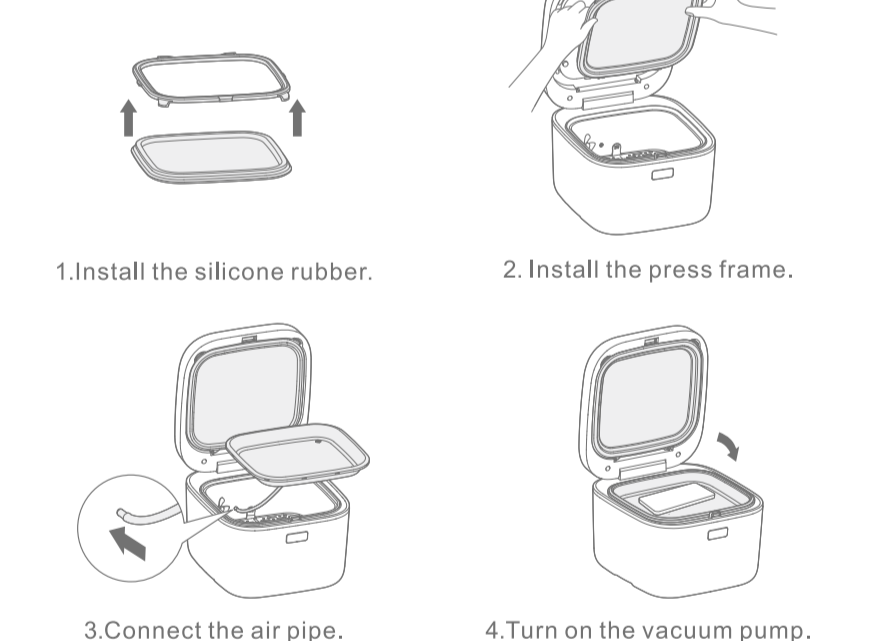
**Tips:**  
1. Increase the transfer time if the color of the transferred pattern is too light.  
2. Reduce the transfer time if the color of the transferred pattern is too dark.

Different types of plates can be printed



Max. transfer area: 220mmX220mm

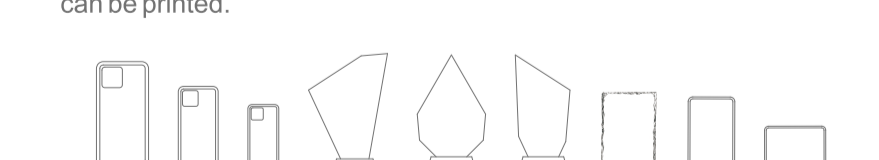
### Printing of plane products



**Parameter Setting**  
Material: Mobile phone case  
Qty: 1 PCS  
Press SET UP button to show the symbol +/-.  
Change to (SET UP -1) mode  
Upper temp.: 180°C Lower temp.: 180°C  
Time: 240S

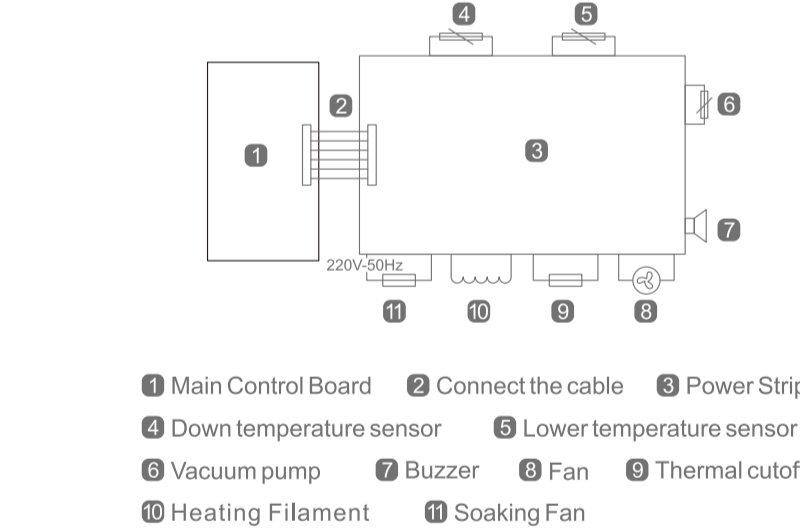
**Tips:**  
The time and temperature for making different products will vary and they can be changed according to the needs of users.

Mobile phone case, stone plate, aluminum plate, crystal plate, etc. can be printed.

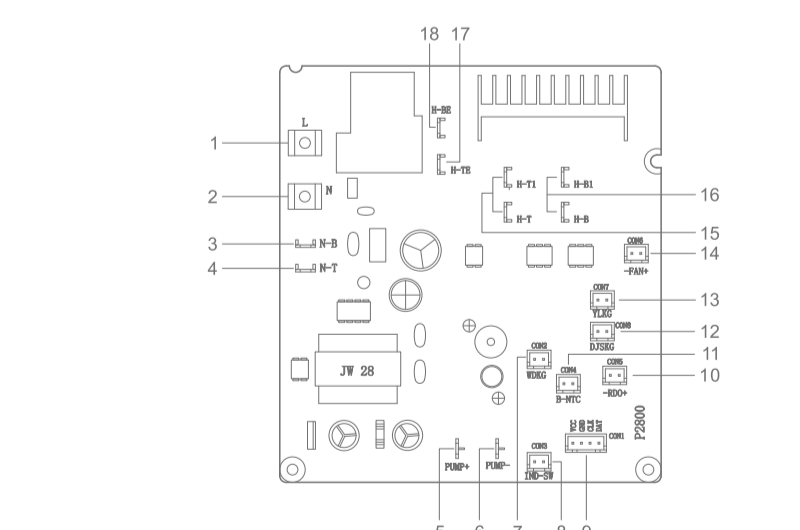


Max. transfer area: 180mmX210mmX25mm

### Electrical Diagram



### Circuit Board wiring diagram



1. Input live wire
2. Input zero wire
3. Output zero wire of iron
4. Upper heating output zero wire
5. Positive pole of vacuum pump
6. Negative pole of vacuum pump
7. Uniform Fan
8. Exhaust valve
9. Display panel
10. Upper heating temperature probe
11. Iron temperature probe
12. Iron button
13. Air pressure switch
14. Fan
15. Upper heating output live wire
16. Output live wire of iron
17. Standby(H-TE) Upper fever
18. Standby(H-BE) Under fever

### Factory Default Parameters

Mode	Upper temp.	Lower temp.	Time
SETUP-1 Free mode	210°C(410°F)	210°C(410°F)	60S
(A)-T-SHIRT	No heating	180°C(356°F)	25S
(B)-T-SHIRT	No heating	180°C(356°F)	60S
PLATE	210°C(410°F)	220°C(428°F)	420S
1-MUG	210°C(410°F)	220°C(428°F)	600S
4-MUGS	210°C(410°F)	220°C(428°F)	720S

### Basic Product Parameters

Name: Vacuum heat transfer machine	Model: PD2800
Upper heating method: Glass plate heating	
Lower heating method: Aluminum plate heating	
Rated voltage/frequency: 220V~50Hz 110V~60Hz	Rated power: 800W
Packing size: 410X380X350mm	Iron size: 180X205mm
Temp. range: 40°C-220°C (104°F-428°F)	Time range: 1-999S
Gross Weight: 11KG	

### Guarantee

The products are strictly based on the Consumer Protection Law of the People's Republic of China and the Product Quality Law of the People's Republic of China. The services are as follows:  
Within 12 months this product has the performance failure listed in the Product Performance Failure Table. It is confirmed by manufacturer and can be used for maintenance service free of charge. If out of validity, damage caused by force majeure or human causes, the machine is not covered by the warranty, repair in charge.

### Safety instruction

Before operating this unit, please read these instructions completely and save them.  
**Notice:**  
1. Keep unplugging when moving the machine.  
2. Keep unplugging when installing accessories.  
3. Place on a flat and stable platform and operate under ventilated conditions.  
4. Wear special protective equipment when operating the machine

### Warning

- Improper use may result in electric shock, fire, personal injury and other damage.
1. Do not use this machine in a hazardous location.
  2. Do not use when the machine is not working properly.
  3. Do not allow children or adults who do not understand this manual to operate this machine.
  4. Do not disassemble and repair this machine.
  5. Do not use an unsuitable AC outlet.
  6. Do not touch the heating plate when the machine heating

### Troubleshooting

1. (F1) Fault code  
Temperature probe failure. Replace with a new probe.
2. Upper cover cannot be closed  
Please check whether the inner cover is installed properly.
3. Upper heating failure  
1) Please change the mode in case of upper heating failure in MUG-11MUG-4 set up mode.  
2) The glass heating plate may be damaged and replace if required.  
3) The main board is damaged. Change to standby circuit and insert line 15 into line 19.
4. Lower heating failure  
The main board is damaged. Change to standby circuit and insert line 17 into line 20.
5. Smell  
Smell will be produced during the heating and it will be decreased after a period of operation.
6. Vacuum pump working at the time  
Please check whether the product is sealed properly and there may be air leakage.
7. Displayed temperature is inconsistent with actual temperature  
There will be a temperature error of about 10°C during the heating.
8. Leakage during vacuuming  
Please check whether the silicone rubber is intact. Please replace it if it is broken. (Silicone accessories are consumables. An extra set of accessory is provided with the machine or they can be purchased separately).
9. Uneven color of transferred mug  
Please check whether the small blades in the oven are rotating. If not, please check whether the MUG mode is selected. Replace the blade motor if it is damaged.
10. Too light of transferred pattern  
Please increase the transfer time and temperature accordingly.
11. Too dark of transferred pattern  
Please reduce the transfer time and temperature accordingly.
12. No vacuuming  
Check whether there is sound of motor. If not, replace the vacuum pump.

### Warranty

Type	Items	Period
Whole machine	Parts of machine (excl. accessories)	1 year
Accessories	Silicone rubber and mug clamp	No warranty for consumables

