

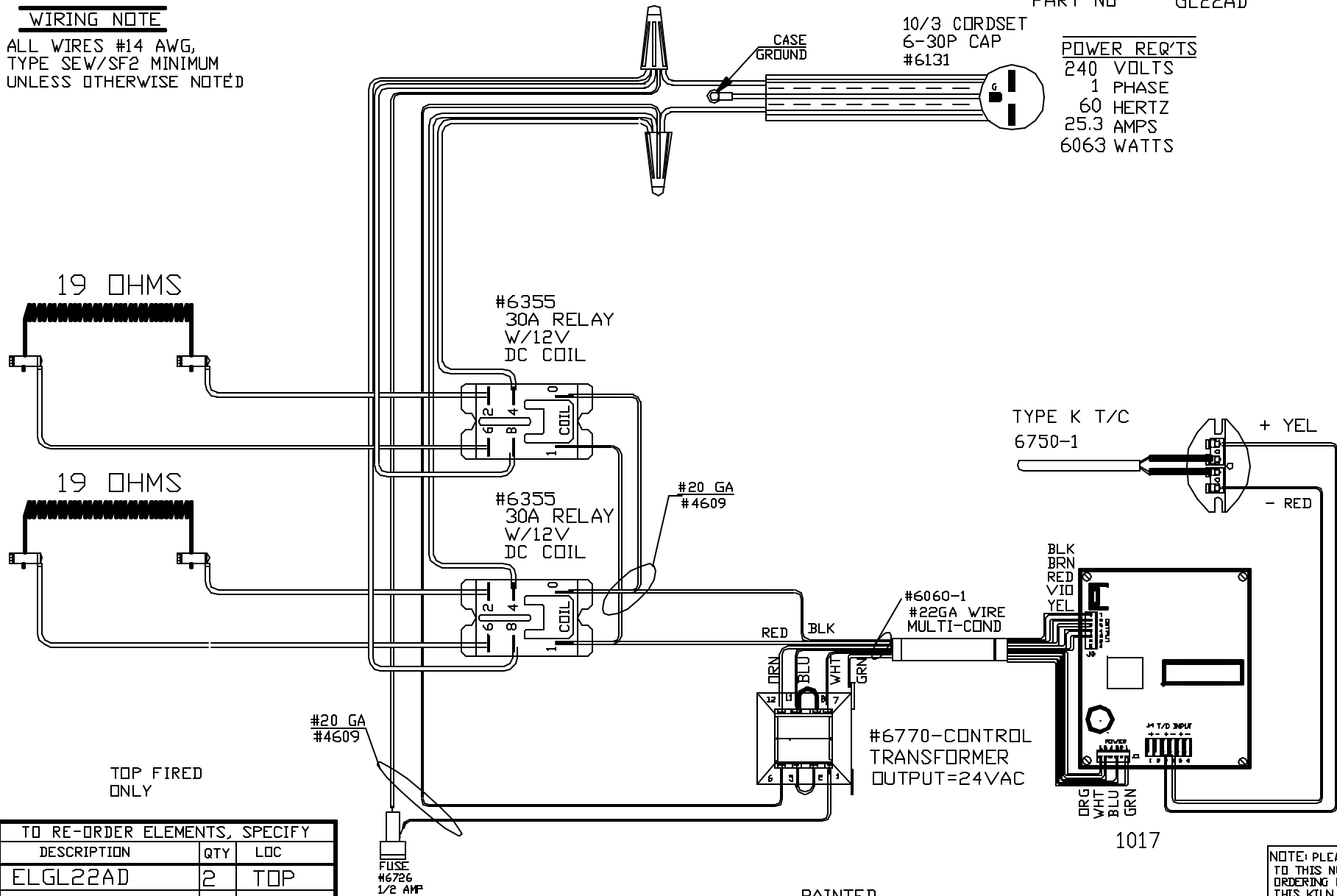
PART NO GL22AD

**WIRING NOTE**

ALL WIRES #14 AWG,  
TYPE SEW/SF2 MINIMUM  
UNLESS OTHERWISE NOTED

10/3 CORDSET  
6-30P CAP  
#6131

**POWER REQ'TS**  
240 VOLTS  
1 PHASE  
60 HERTZ  
25.3 AMPS  
6063 WATTS



19 OHMS

19 OHMS

#6355  
30A RELAY  
W/12V  
DC COIL

#6355  
30A RELAY  
W/12V  
DC COIL

#20 GA  
#4609

#20 GA  
#4609

TOP FIRED  
ONLY

TYPE K T/C  
6750-1

+ YEL

- RED

#6060-1  
#22GA WIRE  
MULTI-COND

#6770-CONTROL  
TRANSFORMER  
OUTPUT=24VAC

BLK  
BRN  
RED  
VIO  
YEL  
DRG  
VHT  
BLU  
GRN

1017

PAINTED  
STEEL CASE

SENTRY 2.0

NOTE: PLEASE REFER  
TO THIS NUMBER WHEN  
ORDERING PARTS FOR  
THIS KILN

TO RE-ORDER ELEMENTS, SPECIFY		
DESCRIPTION	QTY	LDC
ELGL22AD	2	TOP

REV	DATE	BY	DESCRIPTION
-	6-11-96	NJM	
A	8-11-98	NJM	UPDATED DWG, 6-30 CORDSET WAS 10-30
B	10-11-99	BR	CHG CNTRL BD TO DTC 1017
C	2-26-01	BR	CHG CNTRL BD TO SENTRY 1017 & T/C

SWITCH BOX ASSY- 4647

PARAGON INDUSTRIES  
2011 SOUTH TOWN EAST BLVD  
MESQUITE, TEXAS 75149

CATALOG STANDARD

WIRING DIAGRAM

240V, 1PHASE, 60HZ 6063WATTS

N/C

PART NO	REV
GL22AD	C
GL22AD	FILE